

we think transport



WELCOME TO ELECTRI-CITY

Electric drive solutions for urban logistics processes.

An aerial night view of a city, likely Vancouver, with snow-capped mountains in the background. The city lights are visible, and the mountains are covered in snow. The sky is dark with some clouds.

UNSTOPPABLE ELECTRIFICATION!

THE URBAN
TRAFFIC OF THE
FUTURE RUNS ON
ELECTRICITY—
ALREADY TODAY.

e

A growing number of cities are implementing driving bans, special requirements, and restrictions on diesel-powered vehicles. For you as a logistics operator, it is becoming increasingly difficult to reach city centre destinations efficiently and on time. The solution to many problems is obvious – upgrade your vehicle fleet to electric drive technology!

Electric vehicles are a real alternative for urban traffic and transport, especially in cities. With its tried-and-tested eTransport electric drive, BPW offers future-proof and economical technology for your commercial vehicles.

But BPW never stops thinking ahead and wants to work with you to harness the potential of electric mobility and optimize your logistics processes for the long term – with unparalleled expertise, innovative technology and possibly even completely new vehicle concepts.

Let us work together to 'electrify' the transport of the future!



BPW GIVES YOU AN „E“!

As a global partner to vehicle operators and manufacturers, BPW views transport and logistics holistically and for the long term. In the field of electric mobility, you benefit from 120 years of experience and development expertise. With its eTransport electric drive system, BPW offers the perfect solution for the conversion of existing diesel fleets and equipping new vehicles.

eTransport is a new electrically powered axle that was specially developed to be installed in delivery vehicles used for city centre transport and can be individually adapted to the requirements of any fleet. Thanks to its scalable design, even larger vehicle classes over 7.5 t can be equipped with eTransport.

Existing vehicles (based on the MB Vario platform) can be quickly, efficiently and economically retrofitted with eTransport – and the process is even subsidised by the government. In this way you not only avoid availability problems and prevent the consequences of a possible city toll, but also effectively reduce resource consumption and make a valuable contribution to achieving emission targets.



COME WITH US TO ELECTRI-CITY!

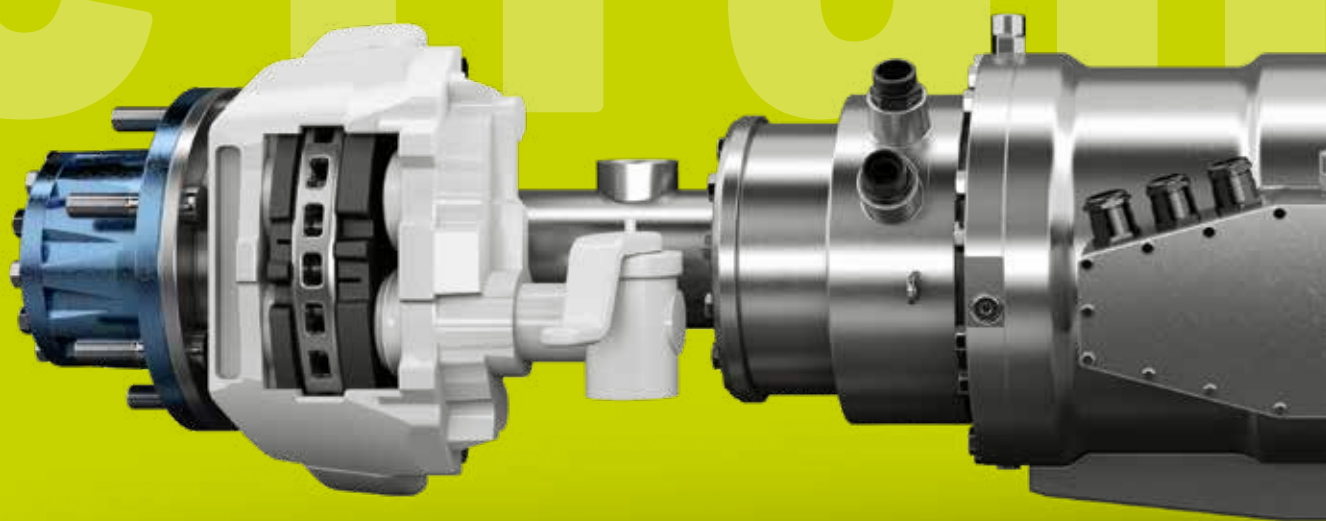




e

The conversion of existing diesel vehicles is only the beginning of the electric revolution in city centres, however. Building on our extensive expertise in the transport of goods, we are working with our partners to develop new, sustainable and process-oriented vehicles. Integrating BPW's eTransport into new vehicles is thus the next step towards electrifying commercial transport in urban areas. Are you coming to Electri-City with us?

eTransport

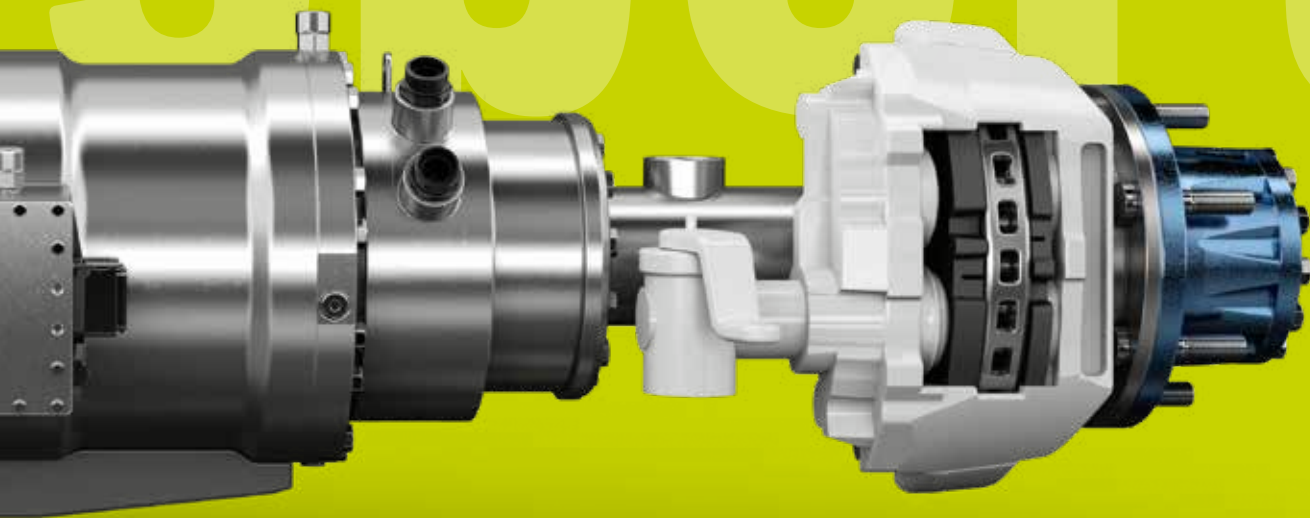


The advantages of the eTransport electric drive axle from BPW are convincing all along the line: the drive is not only economical, but also sustainable. Fully electric, quiet and emission-free, eTransport is also easy to integrate thanks to its compact design. In addition, the drive system offers impressive features like energy recovery and active steering support. With a battery solution tailored to the intended use of the vehicle, it is significantly lighter than a diesel engine, depending on the battery design.

SPORT



BE THE FIRST!
Reserve your eTransport drive system today with no obligation to buy.



136 HP

More power – with 2 × 50 kW, even a 20 per cent gradient poses zero problems.

2 x 3,290 Nm

The axle delivers an impressive 3,290 Nm of torque per wheel, thus easily accelerating vehicles with a gross vehicle weight of 7.5 t.

90 km/h

Similar to conventional vehicles, the maximum speed is limited to 90 km/h.

40 - 120 kWh

Thanks to the scalable lithium-ion battery, you can install just as much capacity as you need.

100 - 150 km

The range of the vehicle is 100 to 150 km.

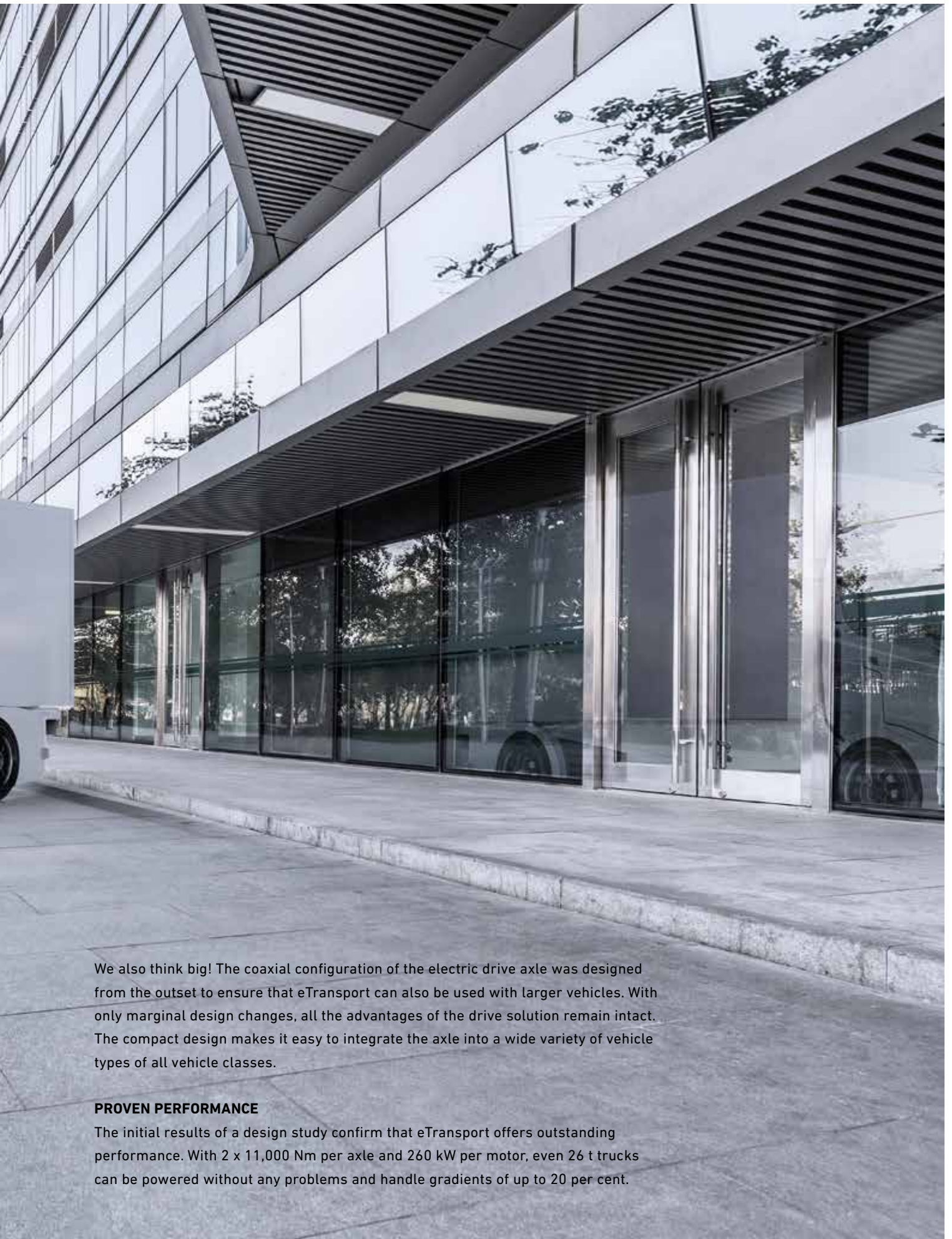
2 - 8 h

You can charge the vehicle batteries in only two to eight hours. In this context, you can also choose between quick charging (50 kW DC) or normal charging (22 kW AC).

BIG POWER IN ELECTRI-CITY!

As scalable as your transport business!





We also think big! The coaxial configuration of the electric drive axle was designed from the outset to ensure that eTransport can also be used with larger vehicles. With only marginal design changes, all the advantages of the drive solution remain intact. The compact design makes it easy to integrate the axle into a wide variety of vehicle types of all vehicle classes.

PROVEN PERFORMANCE

The initial results of a design study confirm that eTransport offers outstanding performance. With 2 x 11,000 Nm per axle and 260 kW per motor, even 26 t trucks can be powered without any problems and handle gradients of up to 20 per cent.

The brands of the BPW Group:



BPW – WE THINK TRANSPORT
YOUR PARTNER FOR EFFICIENT TRANSPORT AND LOGISTICS PROCESSES

The BPW Group researches, develops and manufactures everything needed to ensure that transport keeps moving and is safe, illuminated, intelligent and digitally connected. Worldwide. With sustainable electric drive solutions for intra-urban logistics, our interdisciplinary team is tackling the challenge of making transport and logistics processes more efficient for the long term.

Our approach to developing new products is always shaped by a combination of innovation, passion and our many years of expertise. The BPW team looks forward to working with you to develop new ideas for Electri-City.



BPW eTransport Image 2019 18981901 e **conception GmbH**

BPW Bergische Achsen Kommanditgesellschaft

Postbox 1280 · 51656 Wiehl, Germany · Telephone +49 (0) 2262 78-0

info@bpw.de · www.bpw.de