

# Supplementary assembly instructions for feldbinder air spring supports when replacing the LightTube tubular trailing arm



## Spring bolt fitting with eccentric on stainless steel air spring supports

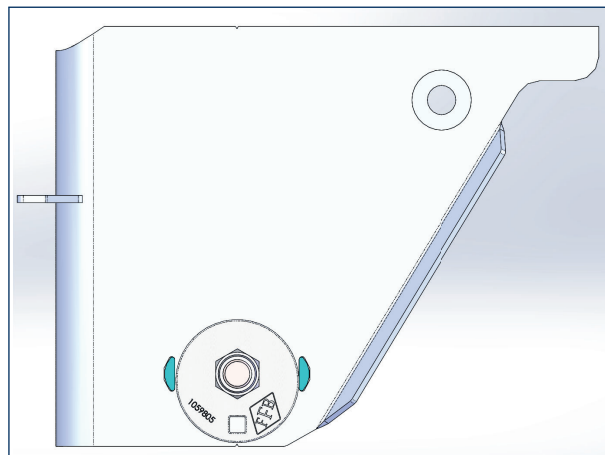
### - Outside

Use new spring bolts and lock nuts.  
All other components can be reused.

Spring bolt lock nut

**M = 650 Nm** (605 - 715 Nm)\*

(see also Assembly instructions replacement LightTube).



Picture 1

## Spring bolt screw connection with eccentric on stainless steel air suspension hanger brackets

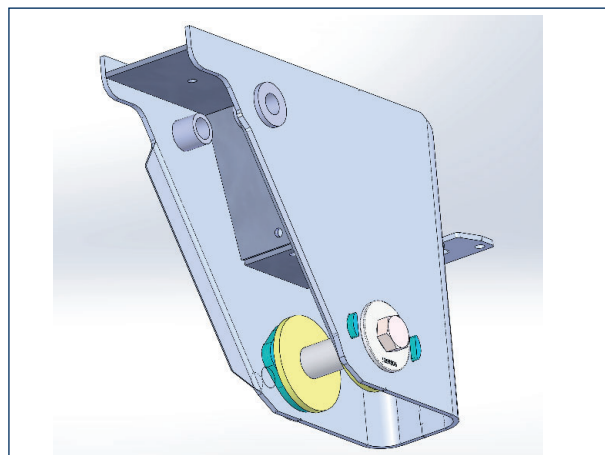
### - Inside

Use new spring bolts and lock nuts.  
All other components can be reused.

Spring bolt lock nut

**M = 650 Nm** (605 - 715 Nm)\*

(see also Assembly instructions replacement LightTube).



Picture 2

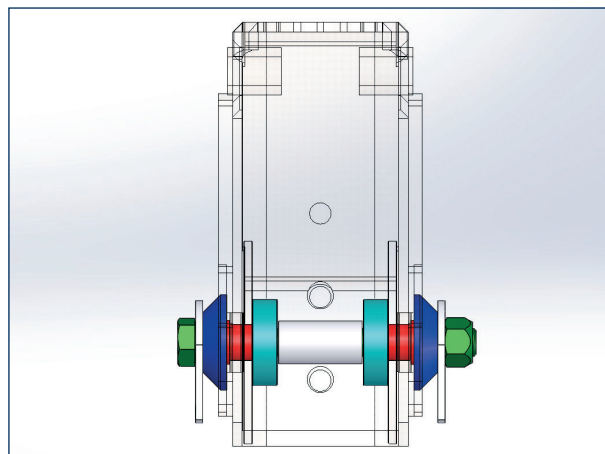
## Spring bolt screw connection without eccentric for with / without axle lift on aluminum air suspension hanger brackets

Use new spring bolts and lock nuts.  
All other components can be reused.

Spring bolt lock nut

**M = 650 Nm** (605 - 715 Nm)\*

(see also Assembly instructions replacement LightTube).



Picture 3

\* When using FFB Feldbinder spring bolts must the  
spring bolt with a tightening torque of  
**M = 420 Nm +120° rotation angle.**