



Edition 2/2007

This edition contains:

- ☞ Conversion of brake camshafts

- ☞ Conversion of hanger brackets to 24 mm spring bolt



Conversion of brake camshafts

From the end of May 2007, the groove in the tooth profile will be deleted from all brake camshafts for drum brakes with support bearings.

This affects the brake sizes SN 300 (NH../NR..) SN 360 (KH../KR..) and SN 420 (H../R..)

This change means the former end digit "3" in the brake camshaft code number is replaced by the end digit "4".
(e.g. 05.097.05.29.3 to 05.097.05.29.4)

The deletion of this groove means the slack adjuster system on the brake camshaft changes.
(Pushed-on bush instead of circlip)

This results in a change in repair kits 09.801.02.13.0 and 09.801.02.15.0 for the conventional brake camshaft bearings up to build year 12/92.

Stocks of existing repair kits 09.801.02.13.0/15.0 are only allowed to be used up with brake camshafts that have the final digit "3".

Repair kit 09.801.06.09.1 is not affected by this change and can be used for brake camshafts with end digits "3" and "4".



Conversion of brake camshafts

Brake camshaft repair kit - overview 09.801.02.13.0 / 09.801.02.13.1

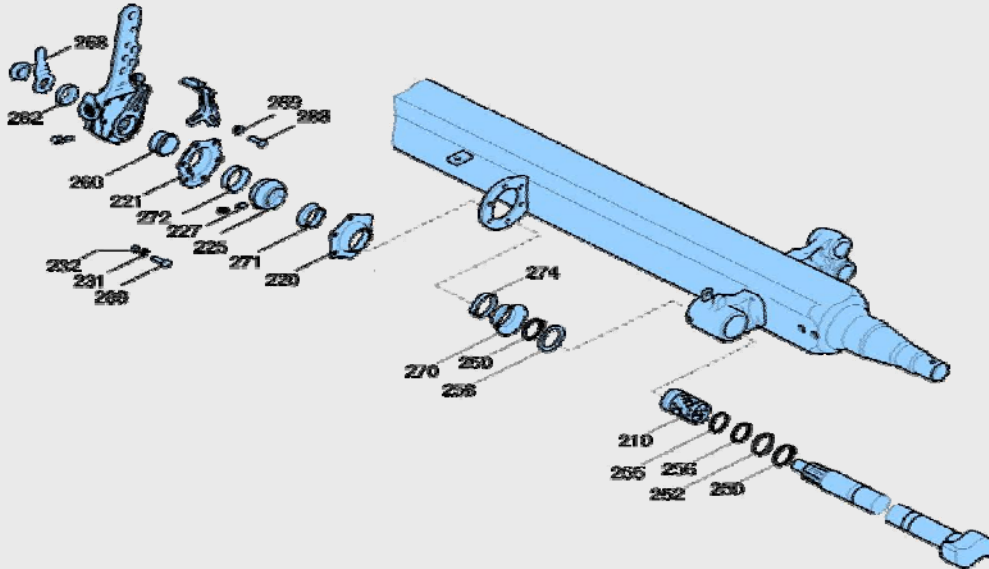
		Repair kit 09.801.02.13.0			Repair kit 09.801.02.13.1		
No.	Description	BPW code no.	Dimension	Qty.	BPW code no.	Dimension	Qty.
		09.801.02.13.0:			09.801.02.13.1:		
		<i>Up to 04/2007</i>			<i>From 05/2007</i>		
210	Bush	03.112.44.34.0	Ø 42 / 46 x 73	1	03.112.44.34.0	Ø 42 / 46 x 73	1
220	Bearing box	03.229.02.09.0		1	03.229.02.19.0		1
221	Bearing box	03.229.02.10.0		1	03.229.02.18.0		1
225	Spherical bearing	03.113.14.01.0		1	03.113.14.04.0		1
227	Grease nipple	02.6850.02.02	BS 8 x 1 / 71412	1	02.6850.17.00	BM 8 X 1 / 71412	1
231	Spring washer	02.5403.08.92	B8 / 137	6	02.5403.08.92	B8 / 137	4
232	Hexagon nut	02.5202.12.82	M 8	6	02.5202.12.82	M 8	4
245	Repair kit	09.801.00.14.2		1	09.801.00.43.1		1
271	Sealing ring	03.120.43.14.0	Ø 41 / 47 x 25	1	03.120.42.09.0	Ø 42 x 15	1
272	Sealing ring	03.120.43.10.0	Ø 34 / 39,5 x 25,5	1	03.120.42.08.0	Ø 42 x 13,5	1
274	Circlip	03.350.30.02.0	Ø 49 x 9	1	03.350.30.02.0	Ø 49 x 9	1
288	Hexagon bolt	02.5025.30.82	M 8 x 25	6	02.5025.30.82	M 8 x 25	4
289	Lock nut (Tensilock)	02.5273.32.82	M 8	2	02.5273.32.82	M 8	2
245 Repair kit		09.801.00.14.2:			09.801.00.43.1:		
250	Locking ring	02.5676.01.00	A 42 x 2,5	2	02.5676.01.00	A 42 x 2,5	2
252	Ring	03.310.12.24.0	Ø 42 / 56 x 2	1	03.310.12.24.0	Ø 42 / 56 x 2	1
254	Ring	03.310.81.02.0	Ø 42 / 46 x 4 (N..)	1	03.310.81.02.0	Ø 42 / 46 x 4 (N..)	1
255	O-Ring				02.5677.37.42	Ø 37 x 2,6	1
256	O-Ring	02.5679.23.00	Ø 40 x 2,5 (green)	1	02.5679.23.00	Ø 40 x 2,5 (green)	1
258	Sealing ring	03.120.42.02.0	Ø 42 / 46 / 55 x 7	1	03.120.42.02.0	Ø 42 / 46 / 55 x 7	1
260	Circlip	02.5616.05.90	Ø 37 / 41 x 2	1			
260	Circlip				03.113.03.06.0	Ø 37,4 / 45 x 21,3	1
262	Washer	03.320.11.16.1	Ø 22,5 / 42 x 10,5	1	03.320.11.16.1	Ø 22,5 / 42 x 10,5	1
268	Lock nut	03.260.14.12.0	M 22 x 1,5 x 15	1	03.260.14.08.0	M 22 x 1,5 x 15	1
270	Sealing ring	03.120.43.14.0	Ø 41 / 47 x 25	1	03.120.43.14.0	Ø 41 / 47 x 25	1
274	Circlip	03.350.30.02.0	Ø 49 x 9	1	03.350.30.02.0	Ø 49 x 9	1

Support bearing repair kit - overview 09.801.02.15.0 / 09.801.02.15.1

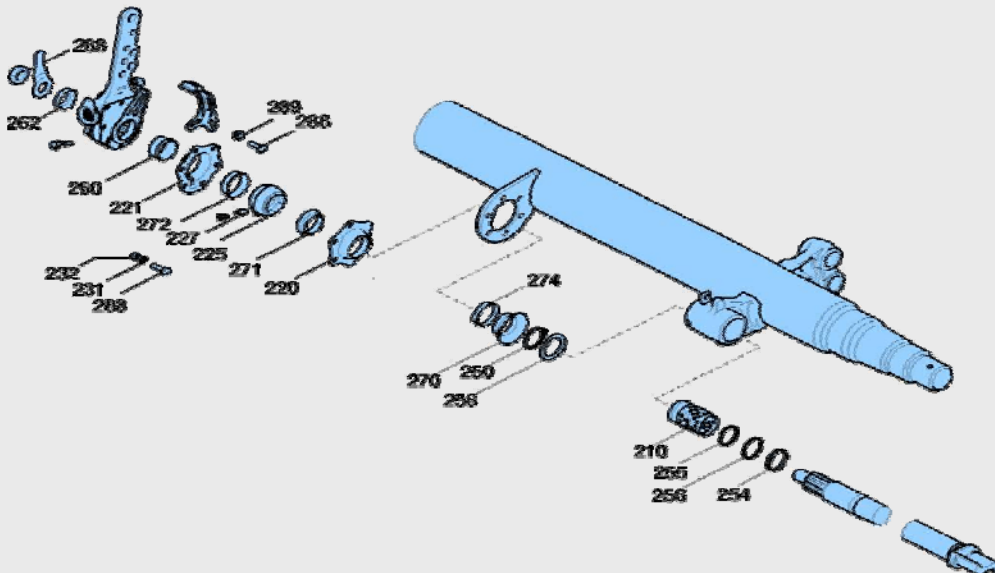
		Repair kit 09.801.02.15.0			Repair kit 09.801.02.15.1		
No.	Description	BPW code no.	Dimension	Qty.	BPW code no.	Dimension	Qty.
		09.801.02.15.0:			09.801.02.15.1:		
		<i>Up to 04/2007</i>			<i>From 05/2007</i>		
220	Bearing box	03.229.02.09.0		1	03.229.02.19.0		1
221	Bearing box	03.229.02.10.0		1	03.229.02.18.0		1
225	Spherical bearing	03.113.14.01.0		1	03.113.14.04.0		1
227	Grease nipple	02.6850.02.02	BS 8 x 1 / 71412	1	02.6850.17.00	BM 8 x 1 / 71412	1
231	Spring washer	02.5403.08.92	B8 / 137	6	02.5403.08.92	B8 / 137	4
232	Hexagon nut	02.5202.12.82	M 8	6	02.5202.12.82	M 8	4
288	Hexagon bolt	02.5025.30.82	M 8 x 25	6	02.5025.30.82	M 8 x 25	4
289	Lock nut (Tensilock)	02.5273.32.82	M 8	2	02.5273.32.82	M 8	2



The aforementioned repair kits are for one axle side!



For axle type H./K.. Up to build year 12/92
Brake SN 420 / SN 360



For axle type N.. Up to build year 12/92
Brake SN 300



Conversion of spring bolt with Airlight II

As part of the series production launch, the spring bolt screw connection on all Airlight II air suspensions systems will be changed from M 30 to M 24.

Introducing a more flexible M 24 spring pin at the same time as increasing the size of the contact surfaces in the screw connection provides additional security against the spring pin screw connection coming undone.

In addition, the new M 24 spring pins have a Geomet coat, which means greasing is no longer necessary.

This modification affects all air suspension systems with 70 mm wide trailing arms.

All the versions will be changed over to M 24 at the start of series production from week 36 onwards.

The adaptation to M 24 spring bolts is performed by changing the spring bolt assemblies, the bushes in the air suspension hanger brackets and channel cross members as well as the steel/rubber/steel bushes in the trailing arms.



Conversion of spring bolt with Airlight II

The trailing arms with steel/rubber/steel bushes for M 24 spring bolts are given the code number index "2" as an assembly!

Example:

05.082.13.88.0 for M 30 spring bolt

05.082.13.88.2 for M 24 spring bolt

During a transitional phase, the affected trailing arms will only be identified with digits 6-9 of the code number.

Example: "1388"

This means that it is necessary to ask what the \emptyset of the bush is when spare parts are required.

Hanger brackets for M 30 spring pins cannot be changed over to M 24 spring pin attachment due to the diameter of the new weld-in eyes.

If replacement is required, the affected hanger brackets must be replaced by the new version.

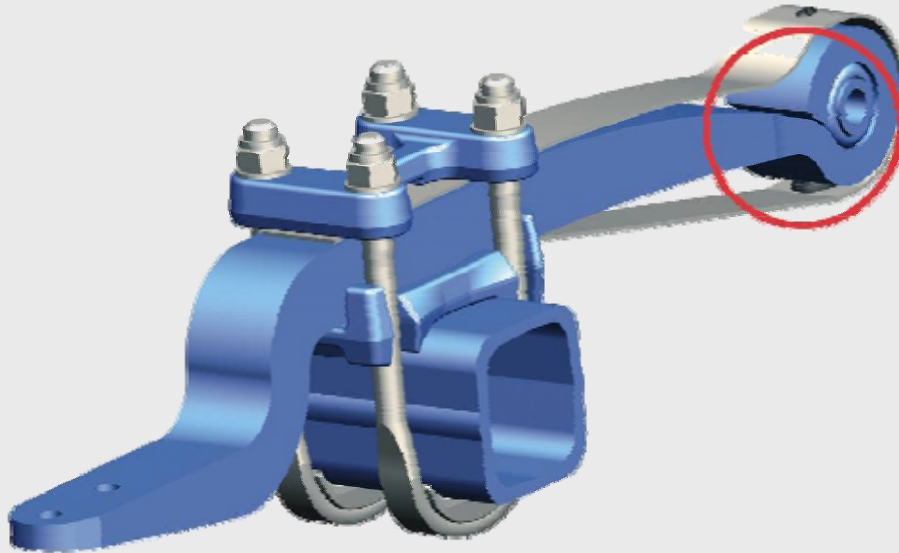
The trailing arm can be converted to M 24 by replacing the steel/rubber/steel bush.

An overview of the affected trailing arm code numbers is provided below!



Conversion of spring bolt with Airlight II

For 30 mm spring bolt "old"	For 24 mm spring bolt "new"
05.082.13.88.0	05.082.13.88.2
05.082.13.89.0	05.082.13.89.2
05.082.13.90.0	05.082.13.90.2
05.082.13.91.1	05.082.13.91.2
05.082.13.92.1	05.082.13.92.2
05.082.13.93.1	05.082.13.93.2
05.082.13.94.1	05.082.13.94.2
05.082.13.95.0	05.082.13.95.2
05.082.13.96.0	05.082.13.96.2
05.082.13.97.0	05.082.13.97.2
05.082.14.01.0	05.082.14.01.2
05.082.14.02.0	05.082.14.02.2
05.082.14.03.0	05.082.14.03.2
05.082.14.04.0	05.082.14.04.2
05.082.14.08.0	05.082.14.08.2
05.082.14.09.0	05.082.14.09.2
05.082.14.10.0	05.082.14.10.2
05.082.14.11.0	05.082.14.11.2
05.082.14.12.0	05.082.14.12.2
05.082.14.13.0	05.082.14.13.2
05.082.14.14.0	05.082.14.14.2
05.082.14.17.0	05.082.14.17.2
05.082.14.22.0	05.082.14.22.2
05.082.14.23.0	05.082.14.23.2
05.082.14.24.0	05.082.14.24.2
05.082.14.25.0	05.082.14.25.2



SRS bush for M 30 spring bolt

02.0315.98.00

(Ø 30 x 60 x 72)

SRS bush for M 24 spring bolt

02.0314.24.00

(Ø 24 x 60 x 72)