

New Components for ECO Drum

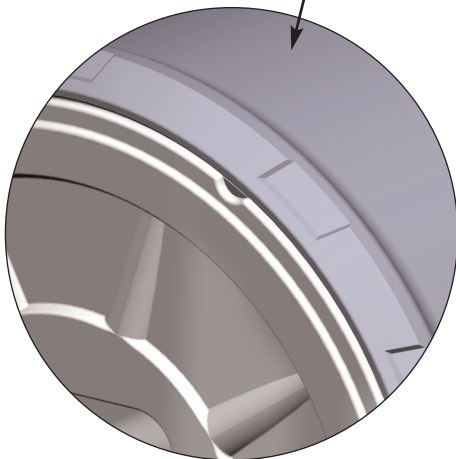
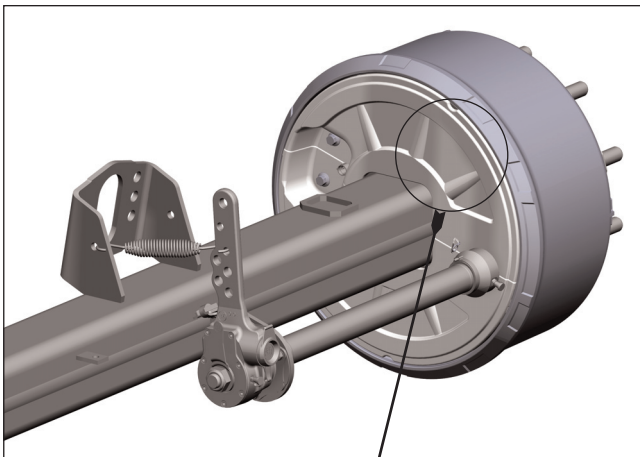
BPW has made detail changes to the cover plate of the ECO Drum drum brake and the brake drum.

Henceforth, only the new brake drums and the new cover plates will be supplied in exchange.

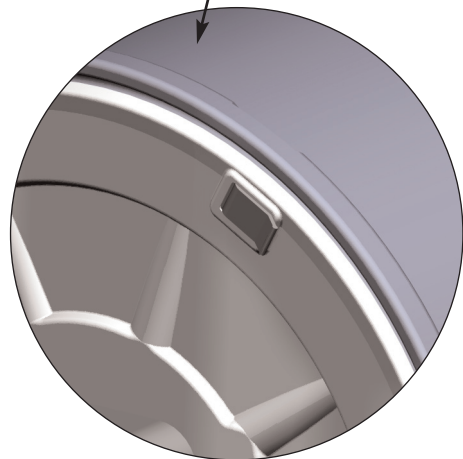
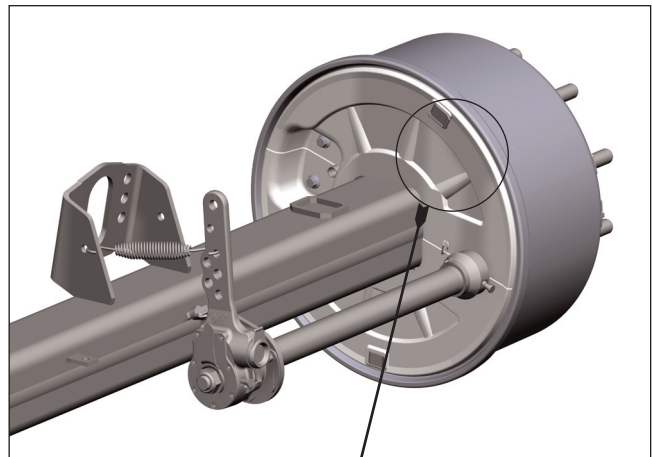
All the new components are fully compatible with the previous ones and the brake drums can also be used on the previous drum brake axles without exchanging the cover plates.

However, when switching to the new brake drums, BPW also recommends that the new cover plates be used to ensure optimum sealing.

ECO Drum - Old version



ECO Drum - New version





Below a summary of the old and new article codes:

Brake drums SN 4218		Brake drums SN 4220	
ECO Drum - OLD	ECO Drum - NEW	ECO Drum - OLD	ECO Drum - NEW
03.109.67.34.0	03.109.67.76.0	03.109.77.35.0	03.109.77.41.0
09.109.67.34.0	09.109.67.76.0	09.109.77.35.0	09.109.77.41.0
03.109.67.29.0	03.109.67.79.0	03.109.77.33.0	03.109.77.42.0
09.109.67.29.0	09.109.67.79.0	09.109.77.33.0	09.109.77.42.0
03.109.67.31.0	03.109.67.78.0	03.109.77.32.0	03.109.77.43.0
09.109.67.31.0	09.109.67.78.0	09.109.77.32.0	09.109.77.43.0
03.109.67.32.0	03.109.67.77.0	03.109.77.30.0	03.109.77.44.0
09.109.67.32.0	09.109.67.77.0	09.109.77.30.0	09.109.77.44.0
		03.109.77.36.0	03.109.77.45.0
		09.109.77.36.0	09.109.77.45.0
		03.109.77.34.0	03.109.77.46.0
		09.109.77.34.0	09.109.77.46.0

Sets of covering components SN 4218 / SN 4220	
ECO Drum - OLD	ECO Drum - NEW
03.010.91.98.0	99.00.000.1.21
03.010.91.99.0	
03.010.91.92.0	99.00.000.1.22
03.010.91.93.0	
99.00.000.1.12	99.00.000.1.23
03.010.71.01.0	99.00.000.1.24
03.010.71.02.0	
03.010.71.03.0	
03.010.71.04.0	
99.00.000.1.14	99.00.000.1.28
99.00.000.1.07	
99.00.000.1.17	99.00.000.1.25
99.00.000.1.15	99.00.000.1.26
99.00.000.1.19	99.00.000.1.27
99.00.000.1.13	99.00.000.1.29
99.00.000.0.93	
99.00.000.0.95	99.00.000.1.30
99.00.000.1.18	99.00.000.1.31
99.00.000.0.97	
99.00.000.1.19	99.00.000.1.27
99.00.000.1.16	99.00.000.1.32