



The brands of the BPW Group:



# NEWS Aftermarket

74932201e

AM01 / 2022

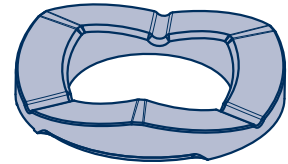
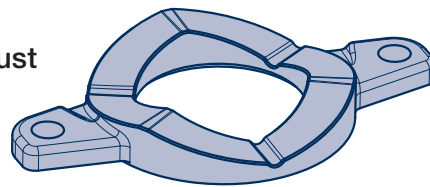
## Optimised corrugated thrust washers for steering axles - BPW item numbers 03.128.05.06.0 / 07.0 and 03.128.05.09.0 / 10.0

In December 2021, BPW introduced new, reinforced and optimised corrugated thrust washers as original equipment and also in the aftermarket. Consequently, a mixed installation of old and new corrugated thrust washers is no longer permissible.

In order to prevent incorrect pairings, the new repair kits **09.801.09.38.0** and **09.801.09.39.0** were created for items 03.128.05.09.0 and 03.128.05.10.0 for the introduction in the aftermarket. Repair kit 09.801.09.38.0 contains the optimised corrugated thrust washers and their fasteners for one end of the steering axle, repair kit 09.801.09.39.0 contains the components for repairing an entire steering axle.

From now on, the corrugated thrust washers must always be replaced on each end of the axle in pairs. However, a mixed installation of old and new corrugated thrust washers on each end of the axle is possible.

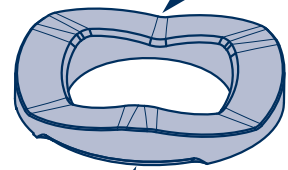
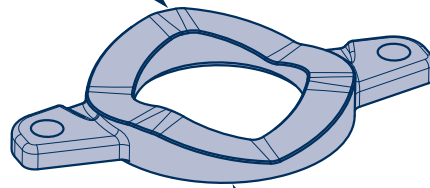
Old version of the corrugated thrust washers:



Flattened undulation

Reinforced trough

New corrugated thrust washers: modified contour



Omission of the hollows in the bearing faces

Due to the aforementioned corrugated thrust washers having been modified and individual replacement no longer being allowed, corrugated thrust washers 03.128.05.06.0 and 03.128.05.07.0 have been blocked and are no longer available individually with immediate effect!

In order to guarantee that the corrugated thrust washers are always replaced on each end of the axle from now on, the new repair kit **09.801.09.40.0** was created as a replacement for 03.128.05.06.0 and 03.128.05.07.0.

The existing repair kits 09.801.02.35.0 / 09.801.02.37.0 and 09.801.08.46.0 will remain in place until further notice.

