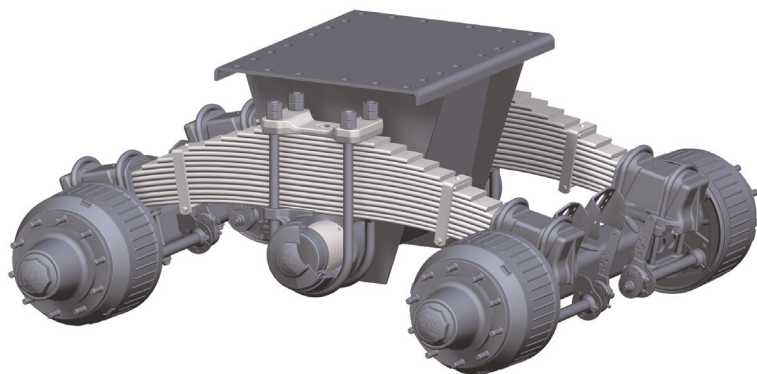


Optimization of BPW twin-axle bogies (W-type suspensions)

In the field of mechanical suspensions, BPW has technically revised and optimised the BPW twin-axle bogies (W-type suspensions) for axle loads between 2x14 t and 2x20 t.

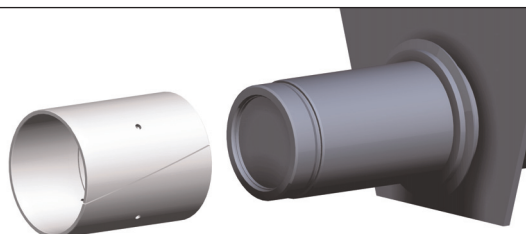
The revised units will be supplied from April 2011.



BPW twin-axle bogies (W-type suspensions) are designed to cope with the most difficult work (e.g. hard ground or tipper use). The long axle compensation paths make these suspensions particularly suitable for such work. The twin-axle suspensions only require low maintenance and the delivery as a fully-assembled suspension unit ready for installation means that they are easy to install.

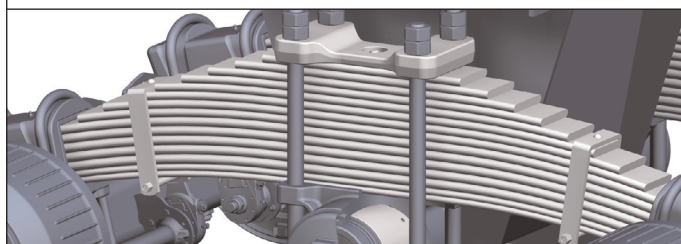
The following components were revised:

Axle support bearing with a new bush made from fiber-reinforced plastic



-> a better fail-safe property can be ensured due to a special design of the bush

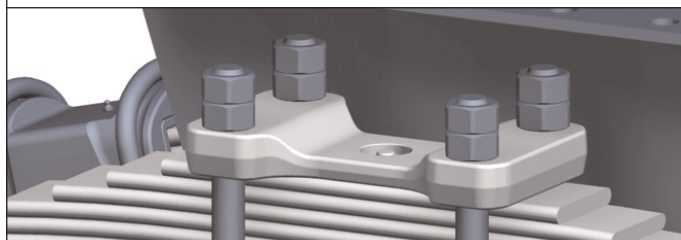
Multi-leaf springs



New design related to the axle loads

-> multi-leaf springs made of high spring steel to BPW - quality - standards
-> highest reliability and durability

Mounting



Forged spring plates

-> Weight reduction with increased hardness

The introduction of the technically-optimized BPW twin-axle bogies (W-type suspensions) will mean they will carry a new BPW code number.

Please get in touch with your BPW contact for further information.