

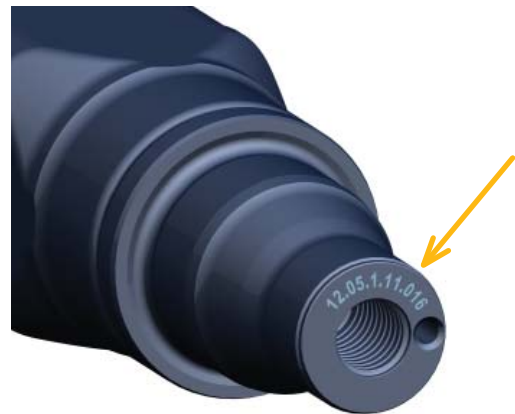
Lettering of the axle stub by BPW

BPW already marks all of its axles with an axle type plate. In the case of rigid axles, the axle stubs receive lettering through the axle beam welding number.

Up to now, the lettering has been placed on the axle stub between the bearing seats.

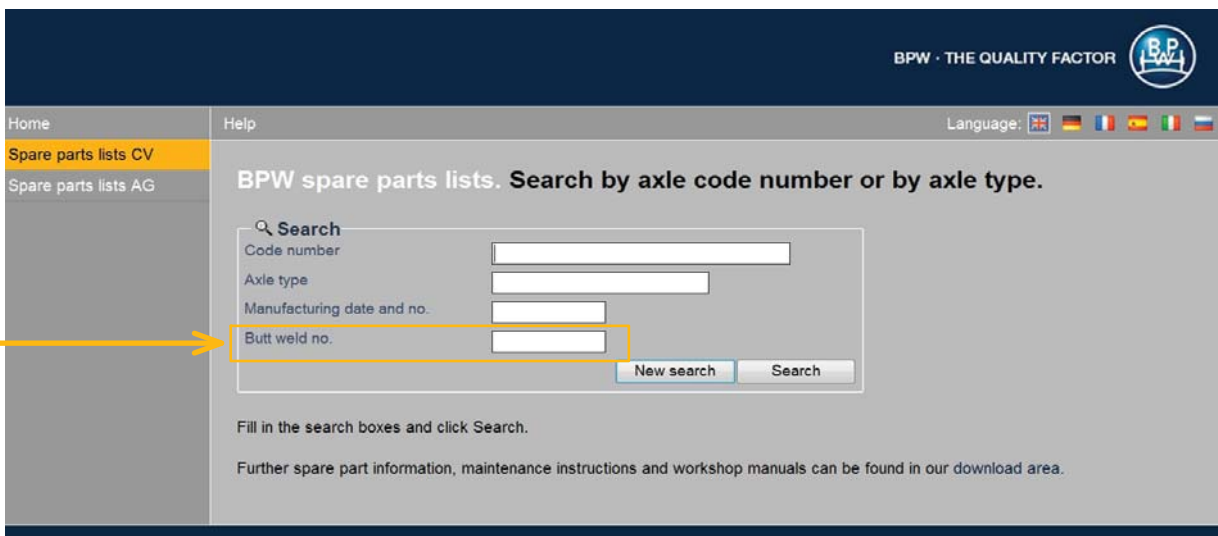



From June 2012, the axle beam welding number will now be stamped onto the axle stub on the front.




If the axle type plate becomes illegible, it is still possible to access the spare parts documentation by using the axle beam welding number.

Please use our home page for this purpose: www.bpw.de



BPW · THE QUALITY FACTOR 

Home Help Language: 

Spare parts lists CV
Spare parts lists AG

BPW spare parts lists. Search by axle code number or by axle type.

Search

Code number

Axle type

Manufacturing date and no.

Butt weld no.

Fill in the search boxes and click Search.

Further spare part information, maintenance instructions and workshop manuals can be found in our download area.

In addition to providing improved accessibility, the new positioning on the front provides the advantages of ensuring longer durability and better visibility of the axle beam welding number.