

THIS IS HOW THE SOLUTIONS DIFFER:

	BPW OES NEW PRODUCT	BPW REMAN LINE	THIRD-PARTY SUPPLIER REMANU- FACTURED PRODUCT
Life expectancy	100%, since OE version	lower, since partly with used components	expected to be lower, as partly mixed installation of used components and/or partial use of replica parts
Proportion of BPW new parts*	100 %	> 80 %	max. 30% when using original BPW repair kits
Quality	BPW OE original equipment	BPW quality	partly components of replica quality
Warranty	24 months	12 months	various, supplier-dependent
BPW five-year ECO Plus warranty	retains validity	retains validity	loses validity
Technology and design status	always latest OE series status	matching, product improvements taken into account	older, depends on used components
Production and function check	BPW production system with 100% end-of-line check	BPW production system with 100% end-of-line check	often manual, without BPW test specification
Corrosion protection	high-quality KTLZn coating	high-quality new KTLZn coating	new paint
Visual condition	excellent, new	very good, possibly slight signs of use, used	partially very good, possible signs of use, used
Supply capability	immediately	depends on the availability of old products	depends on the availability of old products
Identification	grey BPW type plate	green BPW type plate	often foreign type plate, therefore loses BPW manufacturing history
Packaging	brown cardboard box with blue stripes, white inscription 'BPW Genuine Parts'	brown cardboard box, blue inscription 'BPW Reman Line'	various
Compliance and patent situation	safeguarded	safeguarded	potential risk, since not original

\* Calculated on number of components

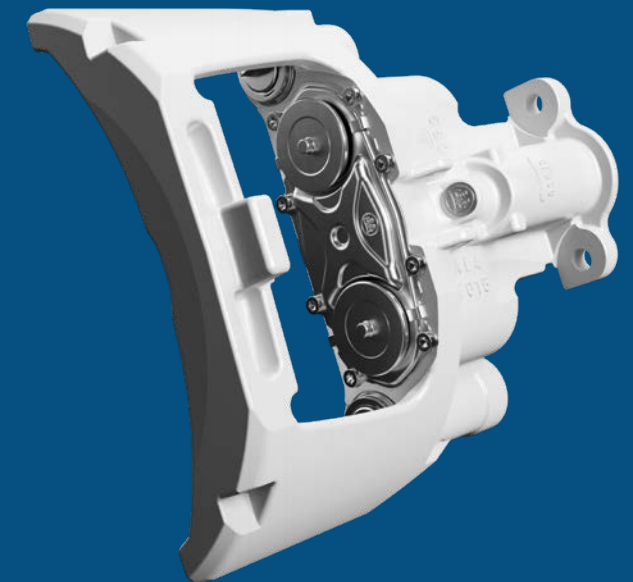
The brands of the BPW Group:



we think transport 

# MAKES EVERYTHING ELSE LOOK OLD.

ECO Disc brake caliper from **BPW Reman Line**



BPW core range 19382201 e divve GmbH

**BPW Bergische Achsen Kommanditgesellschaft**

Postbox 1280 · 51656 Wiehl, Germany · Phone +49 (0) 2262 78-0

info@bpw.de · [www.bpw.de](http://www.bpw.de)

# ECONOMICAL, SAFE, SUSTAINABLE AND ORIGINAL.

The BPW Reman Line is economical, fair value, safe and sustainable. We give brake calipers a second life, but they remain a BPW original.



## ECONOMICAL AND FAIR VALUE

By reusing key components, Reman Line brake calipers offer an attractive price–performance ratio and help you to optimise your total cost of ownership (TCO). This particularly applies to older vehicles where a new OES product does not represent an economical alternative. This enables you to carry out an ideal repair in line with the current value.



## SUSTAINABLE

Thanks to the BPW Reman Line, the repair of older vehicles is both more economical and sustainable. This is because manufacturing ECO Disc brake calipers from the Reman Line conserves resources and consumes significantly less energy than manufacturing new service products. At the same time, CO<sub>2</sub> emissions are reduced by up to 367 tonnes.\*

As such, the ecological footprint of vehicles that are on the road every day with our BPW brake calipers is actively optimised. And it goes without saying that you do not have to forego the usual feeling of safety when using a BPW product.

\* Theoretical example calculation, based on 10,000 brake calipers and 36.7 kg CO<sub>2</sub> eq.



Inner mechanics: BPW tensioner and adjuster unit



## SAFE

The way in which the inner components work together forms the core of the brake force initiation. They are situated in the sealed brake caliper housing and are well protected. This is not without reason as the demands on these parts are enormous: they must ensure power transmission and transfer, adjustment with increasing wear of the brake linings, and resetting of the disc brakes after braking. These components are deliberately not offered by BPW as spare parts as they are absolutely essential for the safety of the brake system. BPW has decades of experience and has sold over three million brake calipers. As a result, BPW has unique expertise in producing and applying these components correctly.



## ORIGINAL

Unlike other suppliers, the BPW Reman Line ECO Disc brake calipers are assembled on the production line for original equipment parts. This ensures the functionality and performance of BPW Reman Line products in the end-of-line test as part of series production.



## ! NOTE

Due to the high loads, BPW TSB Reman brake calipers must not be used in the turntable drawbar trailer front axle.

## BRAKE CALIPER DESIGNS

BRAKE CALIPER	BPW ITEM NUMBER ON THE OE CALIPER (OLD PRODUCT)	BPW ITEM NUMBER ON THE REMAN CALIPER	BPW ORDER NUMBER REMAN CALIPER
TSB 3709	05.362.72.03.0	85.362.72.03.0	89.362.72.13.2
	05.362.72.04.0	85.362.72.04.0	89.362.72.14.2
TSB 4309	05.362.72.01.0	85.362.72.01.0	89.362.72.11.2
	05.362.72.02.0	85.362.72.02.0	89.362.72.12.2