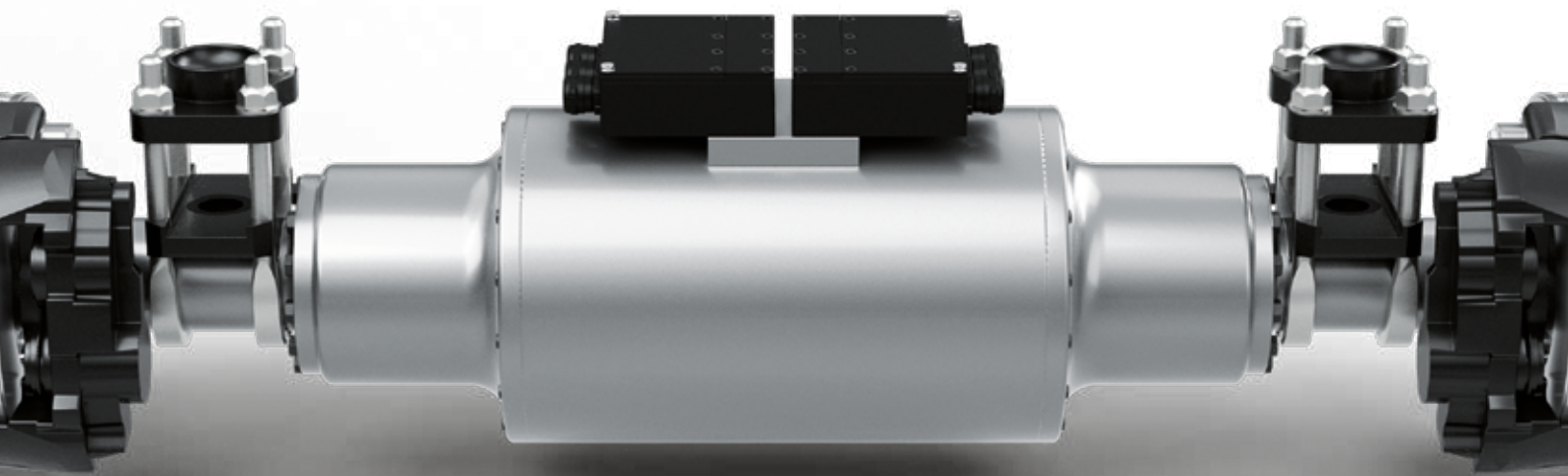


R E I N V E N T M O B I L I T Y



An aerial photograph of a dark asphalt road with yellow dashed lines, winding through a dense, lush green forest. A white truck is visible on the road, moving away from the viewer. The trees are tall and coniferous, creating a textured canopy.

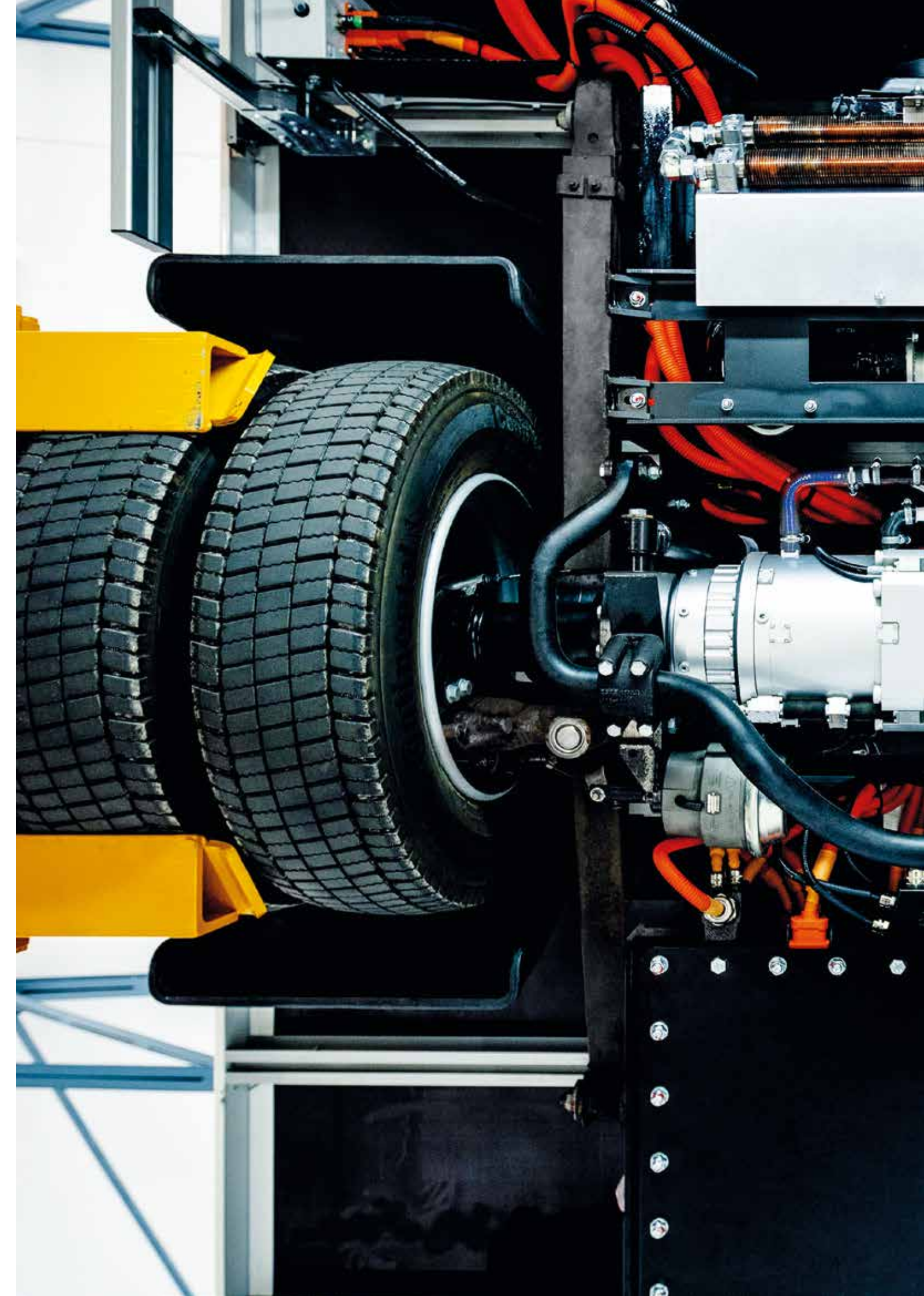
DRIVE POWER

More than half of the world's population already lives in cities today – and this figure will only continue to increase. The resulting amount of traffic in cities is enormous. Making the transition to a sustainable city is both the greatest challenge and the only way to face the resulting environmental problems, such as climate change, environmental pollution or resource consumption. To ensure that future generations can continue to live in harmony with nature, sustainable solutions are needed today that create green logistics and continue to ensure a high quality of life.

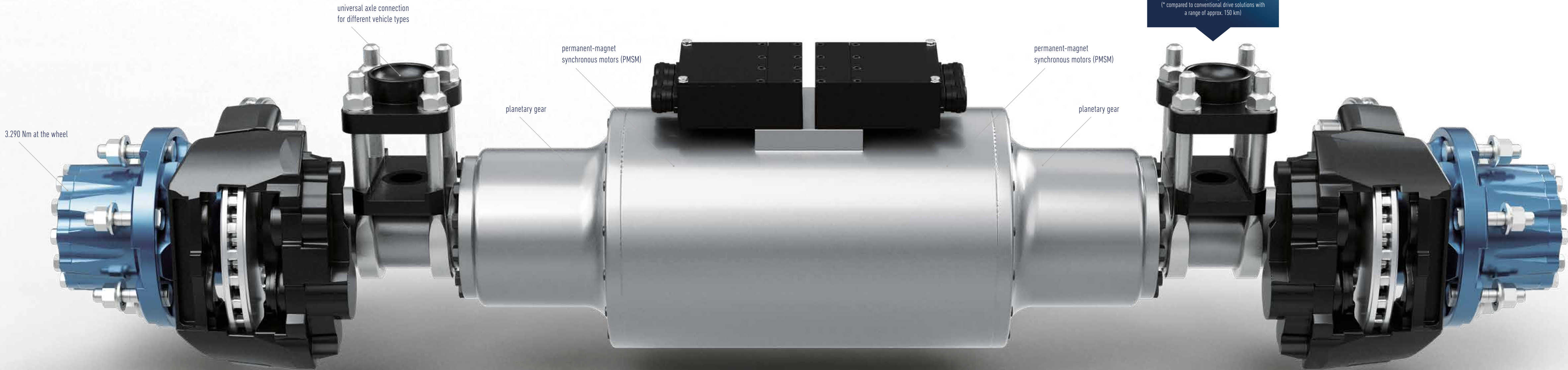
E X E C U T I O N

e

Developing efficient alternative drive systems is not only sensible, but also imperative. eTransport is BPW's approach. It's a new electrically powered axle which was specially developed for installation in delivery vehicles used in intra-urban transport. Existing fleets can be quickly, efficiently and cost-effectively retrofitted with the axle.



eTransport — the scalable drive solution for commercial electric vehicles.



THE BPW EFFECT

100%

Does not add any weight to the vehicle
(* compared to conventional drive solutions with
a range of approx. 150 km)

Drive	Twin Power drive unit consisting of 2 electric motors integrated into the axle	
Laden weight	5,5t up to 7,5t	18t up to 26t
Power	2x50 kW (135 HP)	2x260 kW (700 HP)
Torque	2x3.290 Nm at the wheel	2x11.000 Nm at the wheel
Speed	90 km/h (limited)	90 km/h (limited)
Battery	Lithium-Ion 40-120 kWh (scalable)	Lithium-Ion 40-360 kWh (scalable)
Charging time	2-8 h (depending on charging infrastructure and battery size)	2-12 h (depending on charging infrastructure and battery size)
Range	approx. 100 – 150 km	approx. 100 – 200 km

The benefits of retrofitting

- › Cost-effective and sustainable solution
- › Fully electric drive, quiet and emission-free
- › Compact design, easy to integrate into existing vehicles
- › Includes energy recovery and active steering assistance
- › Includes battery solution specifically tailored to the process;
Lighter than a diesel engine, depending on the battery design

Feel free to contact us:
eTransport@bpw.de

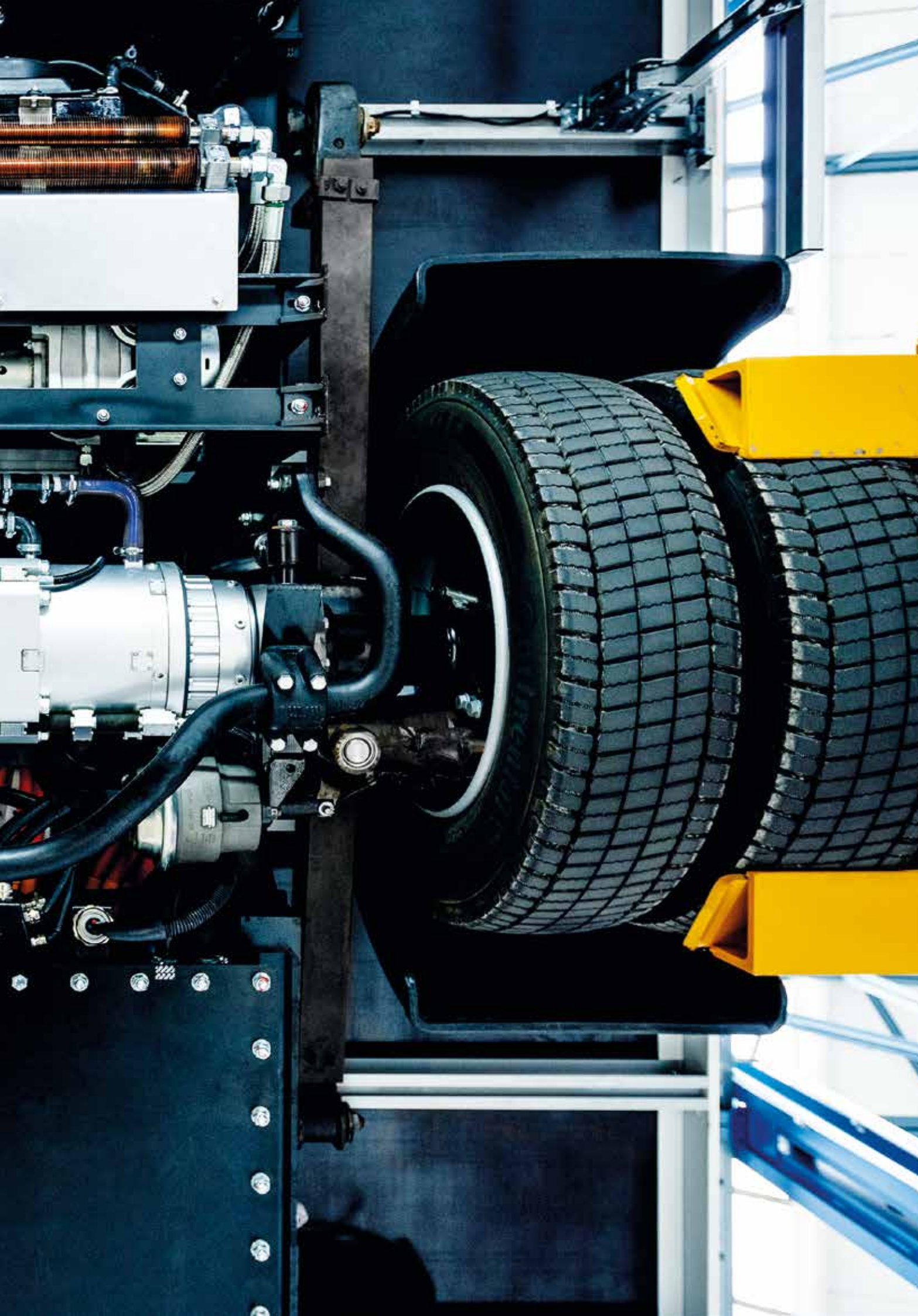


Animation of the
technical benefits



Test drive video





TRANSPORT OF THE FUTURE



EFFICIENT



DECOUPLED



ELECTRIC



DIGITAL

The transport vehicles of the future are clean, quiet and efficient. But suitable electric vehicles are in short supply and existing fleets have usually not yet been written off. We are securing the future of existing fleets and reinventing delivery transport with our solutions.



W E T H I N K T R A N S P O R T



We research and manufacture everything that drives, secures and illuminates transport, as well as makes it intelligent and digitally connected. Worldwide. With sustainable electric drive solutions for intra-urban logistics, our interdisciplinary team is tackling the challenge of making transport and logistics processes more efficient for the long term. Our approach to developing new products is always shaped by a combination of innovation, design flexibility and our many years of expertise. Each team member takes a hands-on approach to work and has a willingness to put planned projects into practice.

The brands of the BPW Group:



BPW eTransport Image 18711801e **David&Goliath**

BPW Bergische Achsen Kommanditgesellschaft

Postbox 12 80 · 51656 Wiehl, Germany · Telephone +49 (0) 2262 78-0

info@bpw.de · www.bpw.de

we think transport

