

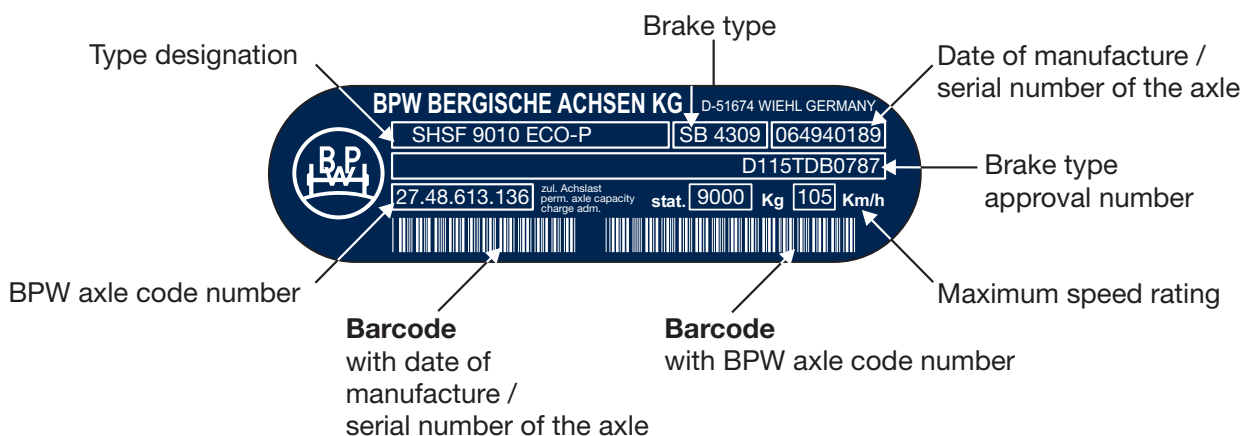
## BPW type plate now with barcodes!

Barcodes are used by a large number of companies to make it possible for data to be recorded easier, faster and more securely. As a result, productivity is boosted and the likelihood of errors reduced.

### Advantages of barcodes:

- Barcodes can be easily and reliably registered electronically
- Barcode systems prevent keying errors or the misinterpretation of handwritten memos
- Barcodes enable the flexible and simple documentation of goods flow

BPW introduced barcodes on its type plates in **November 2006**; this barcode has the standard format Code 39 and can be read out with conventional barcode scanners as used in the industrial sector. The barcode on the left contains the respective axle's date of manufacture and serial number (e.g. 064940189); the barcode on the right contains the BPW axle code number (e.g. 27.48.613.136).



The BPW type plate will continue to be given a protective film. This film can then be removed when the painting process has been completed, so the lettering can remain legible. In addition to this, the BPW type plate has a strong adhesive laminate layer that provides permanent protection for its surface against damage.