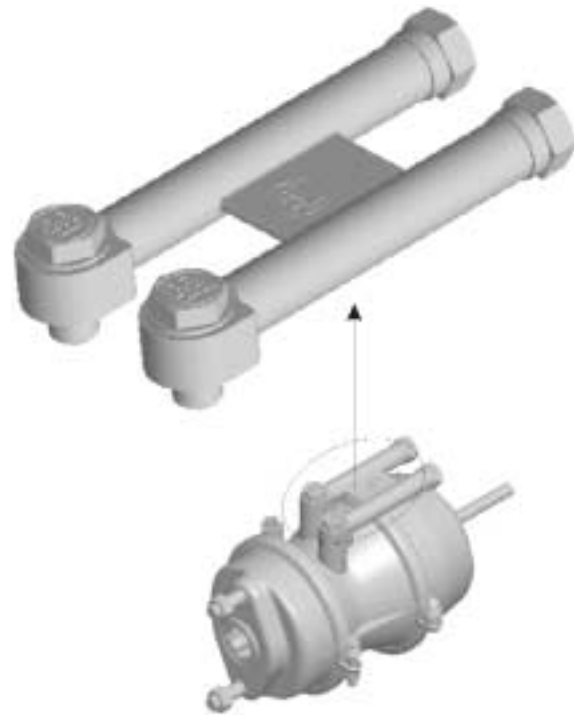


## Compressed air connector extensions for BPW spring-type brake cylinders

From October 2001, compressed air connector extensions will be available for BPW spring-type brake cylinders. These extensions are attached on one side to the existing, original cylinder connectors by means of banjo bolts. On the other side are the new connecting points for installing additional compressed air components. The well-proven M 16 x 1.5 connector thread has been retained.

The following particular advantages result from the use of BPW compressed air connector extensions:

- Where space for installation is restricted, the extension guarantees good accessibility for connecting to the compressed air unit and compatibility with conventional compressed air threaded joint systems.
- Depending on where the installation is to take place, assembly takes significantly less time and so contributes to a reduction in costs.
- The compressed air connectors for the service brake and the parking brake are arranged differently to prevent incorrect connection.



BPW compressed air connector extensions are not only suitable for installation from new but also for retrofitting to existing spring-type brake cylinders.

The assembly kits consist of the actual extension, four O-ring seals and two banjo bolts for attachment to the cylinder. The following code numbers are for retrofitting:

For M/M cylinders (diaphragm / diaphragm) : 05.001.00.05.0  
For M/K cylinders (diaphragm / piston) : 05.001.00.06.0

