

Test Report

No. TDB 0410 dated 25.04.2000

for application of Annex VII Directive 71/320/EEC

1 IDENTIFICATION

1.1 Axle

Manufacturer: BPW Bergische Achsen
Kommanditgesellschaft
D-51674 Wiehl

Make: BPW

Type: PS 38

Model: -

Technically permissible axle load P_e ¹⁾: 3800 daN

1.2 Brake

Manufacturer: See 1.1

Make: BPW

Type: N 3006-3

Model: -

Technically permissible camshaft
input torque $C_{max,e}$: 660 Nm
(for calculation: 550 Nm at 6,5 bar)

Brake drum - Internal diameter: 300 mm

- Mass: See appendix 1 dated 30.10.1998

- Material: Cast iron (grey cast iron)

Brake lining - Manufacturer: Federal-Mogul Friction Products GmbH
D-51709 Marienheide

- Make,- Type: FERODO BERAL, 1548

- Identification: Type indication at front

- Width: 60 mm

- Thickness: 5 mm

- Surface area F_e : 320 cm² | 345 cm²

- Method of attachment: Rivited | adhesive

Brake geometry: See appendix 1 dated 30.10.1998
See appendix 2 dated 29.05.1996

1.3 Wheel (Single)

Rim diameter D_e : See appendix 1 dated 30.10.1998

Dimensions: See appendix 1 dated 30.10.1998

¹⁾ See sheet 3/3



Test Report No. : TDB 0410
Sheet : 2 / 3
Date : 25.04.2000

RWTÜV

Manufacturer : BPW
Type of axle : PS 38

1.4 Tyres

Dynamic rolling radius R_e
at reference load P_e :

See appendix 1 dated 30.10.1998

1.5 Actuation

Brake actuator - Manufacturer: GRAU
- Type: Diaphragm brake actuator
- Model: 16 (345 225 ...)
Lever length l_e : 180 mm

2 RECORD OF TEST RESULTS ²⁾

(corrected to take account of rolling resistance $\hat{=} 0,01P_e$)

2.1 In the case of vehicles of categories O₂ and O₃

Test type:		0	I	
Annex VII, Appendix 1, point:		3.5.1.2	3.5.2.2/3	3.5.2.4
Test speed	km/h	40	40	40
Brake actuator pressure p_e	bar	3,0	-	3,0
Braking time	min	-	2,55	-
Brake force developed T_e	daN	2169	278	1642
Brake efficiency T_e/P_e	-	0,57	0,07	0,43
Actuator stroke s_e	mm	30	-	44
Camshaft input torque C_e	Nm	530	-	530
$C_{o,e}$	Nm	25	-	25

2.2 In the case of vehicles of category O₄: Not applicable

3 NAME OF TECHNICAL SERVICE CONDUCTING THE TEST

RWTÜV Fahrzeug GmbH
Technischer Dienst für Bremsanlagen
D-45307 Essen

4 DATE OF TEST: 24.09.1990

²⁾ See sheet 3/3



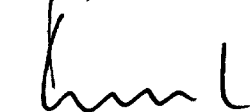
Test Report No. : TDB 0410
Sheet : 3 / 3
Date : 25.04.2000

RWTÜV

Manufacturer : BPW
Type of axle : PS 38

- 5 This test has been carried out and the result reported in accordance with Directive 71/320/EEC as last amended by Directive 98/12/EC and Annex VII, Appendix 1.

Essen, 25.04.2000



Dipl.-Ing. Kaesler



LABORATORY FOR VEHICLE TECHNOLOGY
Testing Laboratory for Braking Systems
according to Directive 71/320/EEC in the
version of Directive 98/12/EC

- 6 **APPROVAL AUTHORITY, if different from the technical service**

Flensburg, ²⁴ MAI 2000

i. A. 



- 7 **TEST DOCUMENTS**

- / Appendix 1: Dimensions brake drum/wheel/tyre (4 sheet)
- / Appendix 2: Brake geometry

1) Calculation with $g = 10 \text{ m/s}^2$

2) Rolling road dynamometer test; $F_e = 345 \text{ cm}^2$, $R_e = 388 \text{ mm}$, $X_e = 99 \text{ mm}$



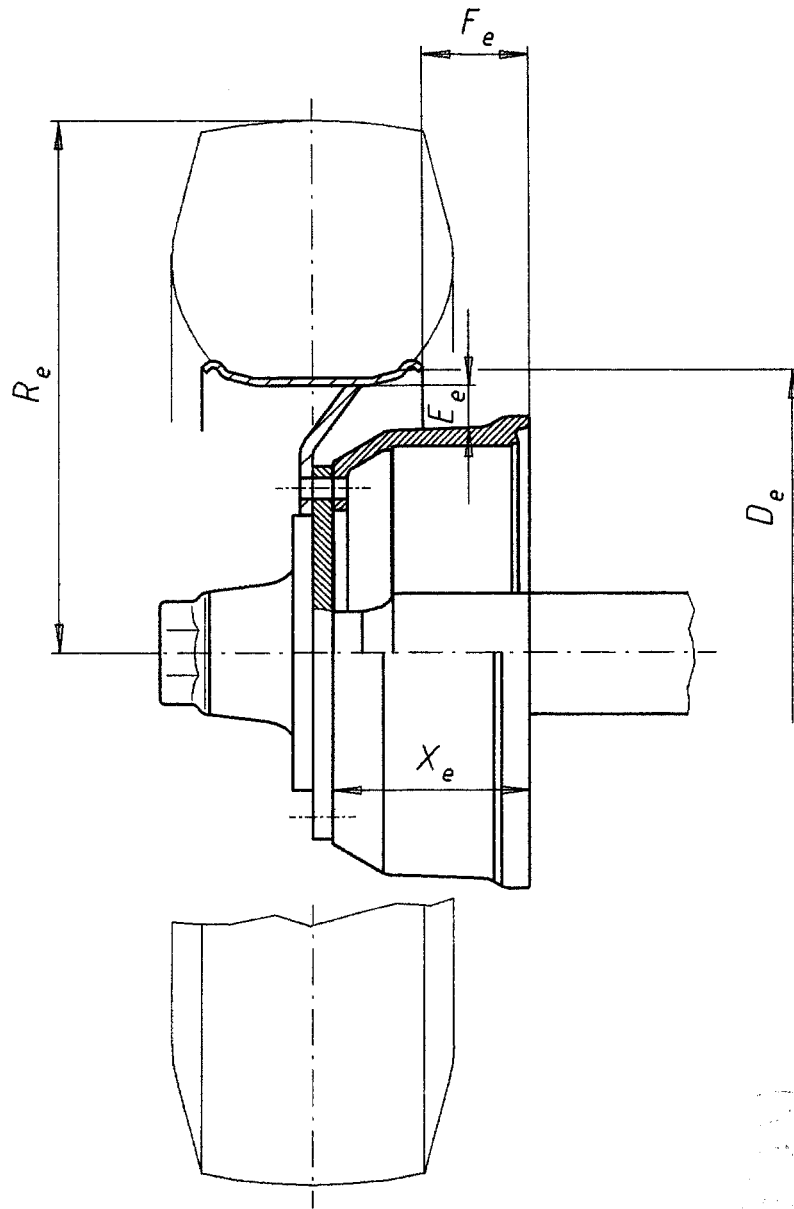
BPW-Brake N 3006-3 appendix 1
to TEST REPORT NO. TDB 0410

TE-2072.0 E

4 Blatt Bl.-Nr. 1

Abl. EZ
Tag 30.10.98
Bearb. Schöler

BPW BERGISCHE ACHSEN Kommanditgesellschaft D-51674 Wiehl



* with integrated hub

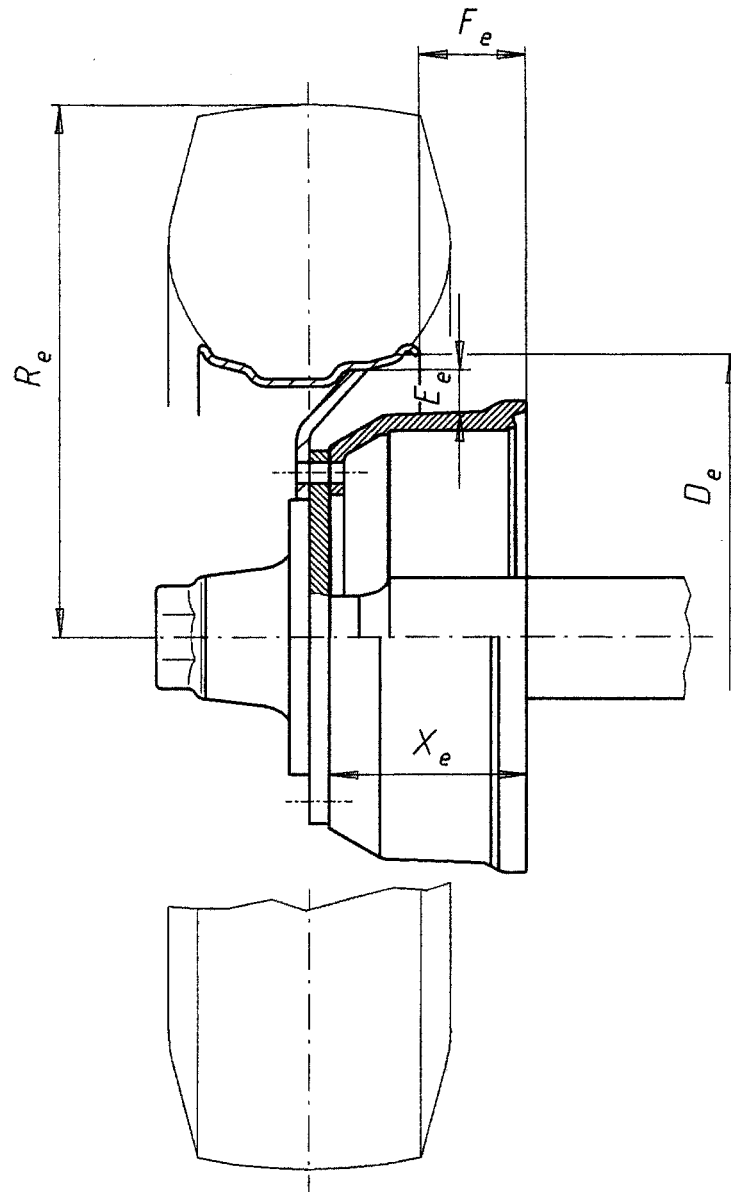
Drum- width X_e (mm)	mass (kg)	Axle load P_e (da N)	Tyre	Rim	R_e (mm)	D_e (mm)	E_e (mm)	F_e (mm)
≥ 99	16,5*	3800	205/80 R 15	6,0 - 15	347	381	20	+4
≥ 120	10	3800	205/80 R 15	6,0 - 15	347	381	20	+43
≥ 99	16,5*	3800	215/70 R 15	6,0 - 15	330	381	20	+4
≥ 120	10	3800	215/70 R 15	6,0 - 15	330	381	20	+43

Ersatz für
Ersetzt durch



Abt. EZ
Tag 30.10.98
Bearb. Schuster

BPW BERGISCHE ACHSEN Kommanditgesellschaft D-51674 Wiehl



* with integrated hub

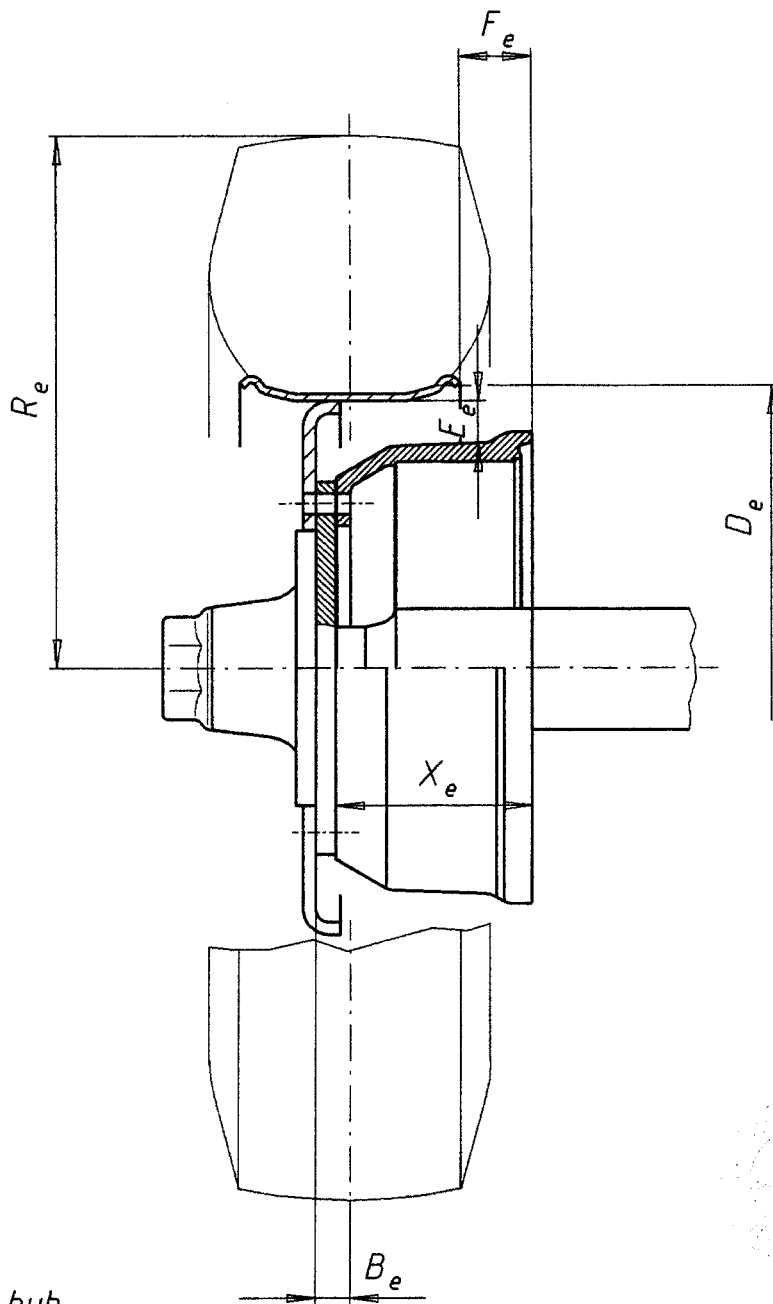
Drum- width X_e (mm)	mass (kg)	Axle load P_e (da N)	Tyre	Rim	R_e (mm)	D_e (mm)	E_e (mm)	F_e (mm)
≥ 99	16,5*	3800	6,50 R 16	4,50 E - 16	361	406	33	+38
≥ 99	16,5*	3800	8,5 R 17,5	17,5×6,00	388	444	52	-6
≥ 120	10	3800	6,50 R 16	4,50 E - 16	361	406	33	+77
≥ 120	10	3800	8,5 R 17,5	17,5×6,00	388	444	52	+33
≥ 99	16,5*	3800	9,5 R 17,5	17,5×6,75	408	444	43	-16
≥ 120	10	3800	9,5 R 17,5	17,5×6,75	408	444	43	+23

Ersatz für
Ersetzt durch



Abt. EZ
Tag 30.10.98
Bearb. Schöler

BPW BERGISCHE ACHSEN Kommanditgesellschaft D-51674 Wiehl



* with integrated hub

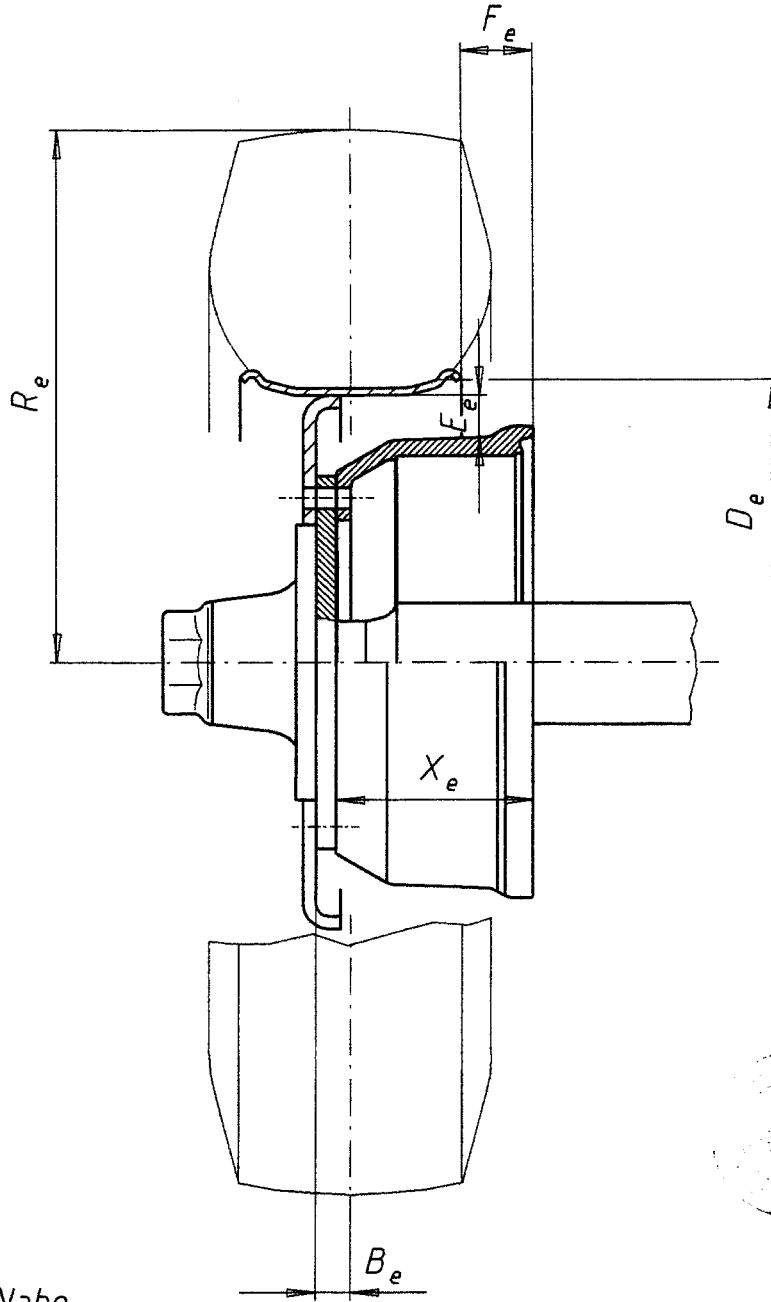
Drum- width X_e (mm)	mass (kg)	Axle load P_e (da N)	Tyre	Rim	R_e (mm)	D_e (mm)	E_e (mm)	F_e (mm)	B_e (mm)
≥ 145	16 *	3800	7,50 R 15	6,00 - 15	368	381	20	-13	63
≥ 145	16 *	3800	7,50 R 16	6,00 G - 16 SDC	390	406	32	-8	63

Ersatz für
Ersetzt durch



Abt. EZ
Tag 30.10.98
Bearb. Schöler

BPW BERGISCHE AXSEN Kommanditgesellschaft D-51674 Wiehl



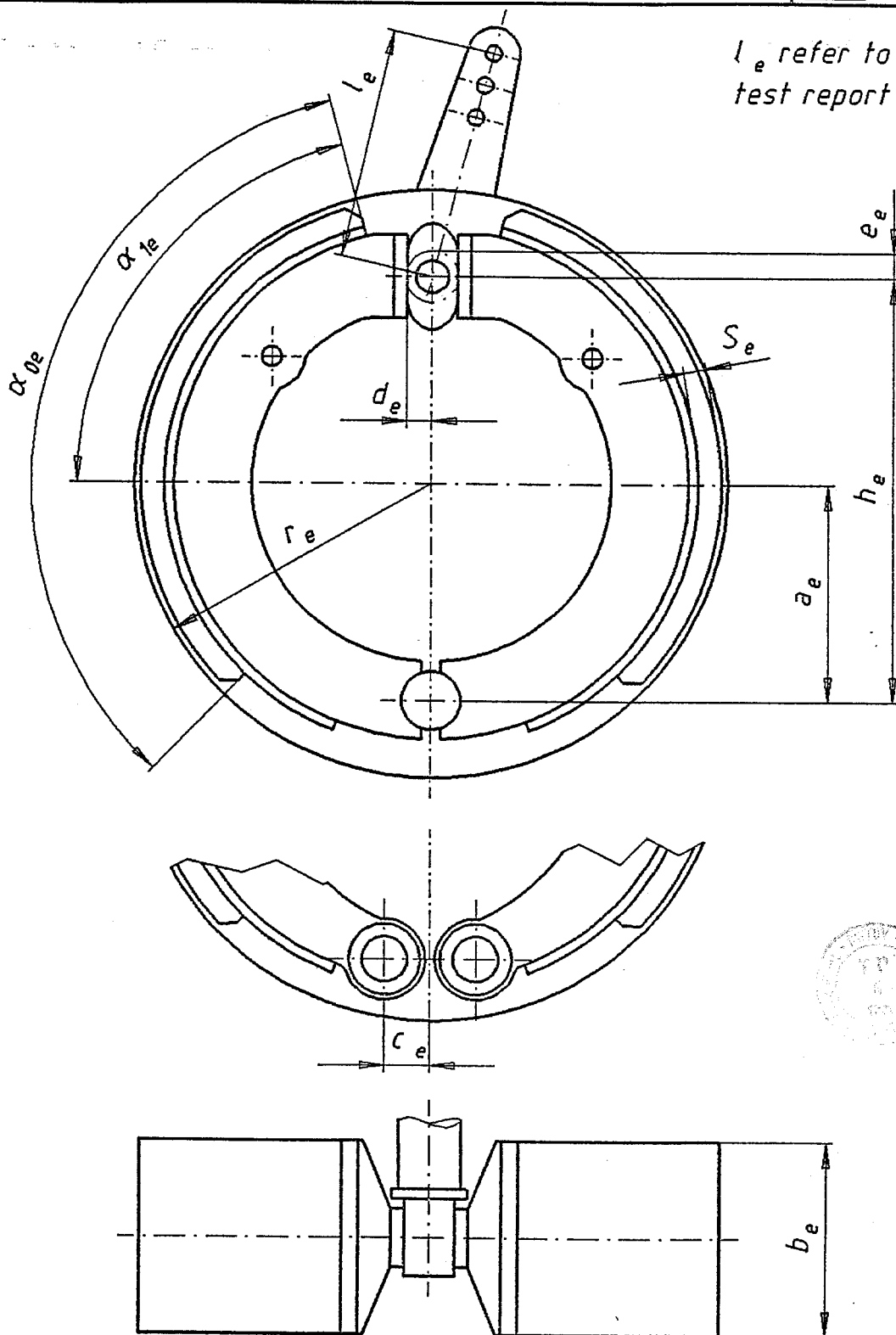
* mit integrierter Nabe

Trommel- breite X_e (mm)	masse (kg)	Achslast P_e (da N)	Reifen	Felge	R_e (mm)	D_e (mm)	E_e (mm)	F_e (mm)	B_e (mm)
≥ 145	16 *	3800	8,5 R 17,5	17,5 × 6,00	389	444	43	-23	63
≥ 145	16 *	3800	235/75 R 17,5	17,5 × 6,75	392	444	43	-33	63

Ersatz für
Ersetzt durch



l_e refer to No.15. of
test report



All dimensions except α_{0e}, α_{1e} and F_e in mm. F_e = braking surface per brake (cm^2).

Type of brake	a_e	h_e	c_e	d_e	e_e	α_{0e}	α_{1e}	b_e	r_e	F_e		S_e
										rivited	adhesive	
N 2504-3	97,5	198	0	9	10	125°	60°	40	125	199	211	5
N 3006-3	122	242	0	11	10	115°	57°30'	60	150	320	345	5
N 3108-3	120	243	0	17	10,5	120°	57°	80	155	423	---	8
N 4008-3	160	325	30	17	13	115°	57°30'	80	200	548	---	8
N 4012-3	160	325	30	17	13	116°	58°	120	200	884	---	8

Abt. EE
Tag 29.05.96
Bearb. Schuster

BPW BERGISCHE ACHSEN Kommanditgesellschaft D-51674 WIEHL

Ersatz für
Ersetzt durch